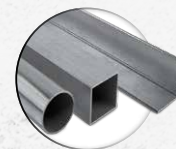


CUTTING DISC FOR INOX



5★
★★★★★

3911-XXX-T41-I



- HIGH PERFORMANCE DISCS FOR CUTTING, SPECIALIZED FOR STAINLESS STEEL, STILL WITH GOOD CUTTING PERFORMANCE IN METAL
- OPTIMAL MATERIAL REMOVAL RATE
- EXTENDED PRODUCT LIFE RESULTING IN LESS DOWNTIME AND WASTE
- REDUCED RISK OF MUSCLE FATIGUE DUE TO LOW VIBRATION
- FREE OF IRON, SULPHUR AND CHLORIDE
- OSA CERTIFIED, IN ACCORDANCE WITH EN12413

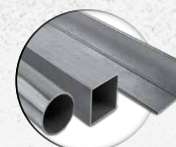
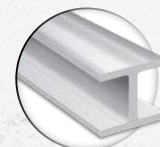
DISC	DESC	EAN	DIAMETER (mm)	THICKNESS (mm)	BORE HOLE	PACK QTY
3911-115-T41-I	CUT-DISC 115X1.0 A60S IN	7314150454570	115	1	22.23	50
3911-125-T41-I	CUT-DISC 125X1.0 A60S IN	7314150454594	125	1	22.23	50
3911-150-T41-I	CUT-DISC 150X1.0 A60S IN	7314150454624	150	1	22.23	50
3911-180-T41-I	CUT-DISC 180X1.6 A46S IN	7314150454631	180	1.6	22.23	50
3911-230-T41-I	CUT-DISC 230X1.9 A46S IN	7314150454648	230	1.9	22.23	50

CUTTING DISC FOR METAL AND INOX



5★
★★★★★

3911-XXX-T41-IM



- HIGH PERFORMANCE DISCS FOR CUTTING ALL TYPES OF STAINLESS STEEL AND METAL
- OPTIMAL MATERIAL REMOVAL RATE
- EXTENDED PRODUCT LIFE RESULTING IN LESS DOWNTIME AND WASTE
- REDUCED RISK OF MUSCLE FATIGUE DUE TO LOW VIBRATION
- FREE OF IRON, SULPHUR AND CHLORIDE
- OSA CERTIFIED, IN ACCORDANCE WITH EN12413

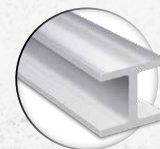
	DESC	EAN	DIAMETER (mm)	THICKNESS (mm)	BORE HOLE	PACK QTY
3911-1151T41-IM	CUT-DISC 115X1.0 A60R IN ME	7314150460595	115	1	22.23	50
3911-115-T41-IM	CUT-DISC 115X1.6 A46R IN ME	7314150454587	115	1.6	22.23	50
3911-125-T41-IM	CUT-DISC 125X1.6 A46R IN ME	7314150454600	125	1.6	22.23	50
3911-180-T41-IM	CUT-DISC 180X2.0 A36R IN ME	7314150454655	180	2	22.23	50
3911-230-T41-IM	CUT-DISC 230X2.5 A30R IN ME	7314150454662	230	2.5	22.23	50

CUTTING DISC FOR METAL



5★
★★★★★

3911-XXX-T42-M



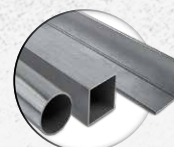
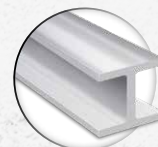
- HIGH PERFORMANCE DISCS FOR CUTTING ALL TYPES OF METAL
- OPTIMAL MATERIAL REMOVAL RATE
- EXTENDED PRODUCT LIFE RESULTING IN LESS DOWNTIME AND WASTE
- REDUCED RISK OF MUSCLE FATIGUE DUE TO LOW VIBRATION
- FREE OF IRON, SULPHUR AND CHLORIDE
- OSA CERTIFIED, IN ACCORDANCE WITH EN12413

DISC	DESC	EAN	DIAMETER [mm]	THICKNESS [mm]	BORE HOLE	PACK QTY
3911-115-T42-M	CUT-DISC 115X2.5 A30R ME	7314150454679	115	2.5	22.23	25
3911-125-T42-M	CUT-DISC 125X2.5 A30R ME	7314150454686	125	2.5	22.23	25
3911-150-T42-M	CUT-DISC 150X2.5 A30R ME	7314150454709	150	2.5	22.23	25
3911-180-T42-M	CUT-DISC 180X3.2 A30R ME	7314150454693	180	3.2	22.23	25
3911-230-T42-M	CUT-DISC 230X3.2 A30R ME	7314150454716	230	3.2	22.23	50

CUTTING DISC FOR METAL AND INOX



3912-XXX-T41-IM



- HIGH PERFORMANCE DISCS FOR GRINDING IN ALL TYPES OF STAINLESS STEEL AND METAL
- OPTIMAL MATERIAL REMOVAL RATE
- EXTENDED PRODUCT LIFE RESULTING IN LESS DOWNTIME AND WASTE
- REINFORCED GLASS FIBER FABRICS FOR MAXIMUM SAFETY HIGH AND STABILITY
- REDUCED RISK OF MUSCLE FATIGUE DUE TO LOW VIBRATION
- FREE OF IRON, SULPHUR AND CHLORIDE
- OSA CERTIFIED, IN ACCORDANCE WITH EN12413

DISC	DESC	EAN	DIAMETER (mm)	THICKNESS (mm)	BORE HOLE	PACK QTY
3912-115-T41-IM	CUT-DISC 115X1.0 A60R IN ME	7314150454808	115	1	22.23	50
3912-125-T41-IM	CUT-DISC 125X1.0 A60R IN ME	7314150454815	125	1	22.23	50

CUTTING DISC FOR **STONE**



3912-XXX-T42-ST



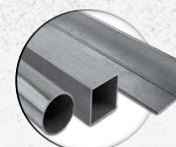
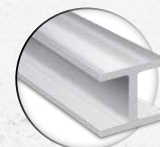
- GREAT PERFORMANCE DISCS FOR CUTTING GENERAL BUILDING MATERIALS AND STONE
- FOR CUTTING STONE AND CONSTRUCTION MATERIALS
- LONG PRODUCT LIFE
- OSA CERTIFIED, IN ACCORDANCE WITH EN12413

DISC	DESC	EAN	DIAMETER (mm)	THICKNESS (mm)	BORE HOLE	PACK QTY
3912-115-T42-ST	CUT-DISC 115X3.2 C30R ST	7314150454723	115	3.2	22.23	25
3912-125-T42-ST	CUT-DISC 125X3.2 C30R ST	7314150454730	125	3.2	22.23	25
3912-180-T42-ST	CUT-DISC 180X3.2 C30R ST	7314150454747	180	3.2	22.23	25
3912-230-T42-ST	CUT-DISC230X3.2 C30R ST	7314150454754	230	3.2	22.23	50

GRINDING DISC FOR METAL AND INOX



3921-XXX-T27-IM



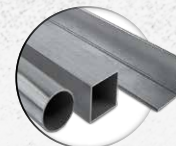
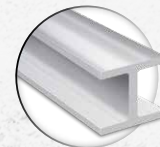
- HIGH PERFORMANCE DISCS FOR GRINDING IN ALL TYPES OF STAINLESS STEEL AND METAL
- OPTIMAL MATERIAL REMOVAL RATE
- EXTENDED PRODUCT LIFE RESULTING IN LESS DOWNTIME AND WASTE.
- REINFORCED GLASS FIBER FABRICS FOR MAXIMUM SAFETY HIGH AND STABILITY
- REDUCED RISK OF MUSCLE FATIGUE DUE TO LOW VIBRATION
- FREE OF IRON, SULPHUR AND CHLORIDE
- OSA CERTIFIED, IN ACCORDANCE WITH EN12413

DISC	DESC	EAN	DIAMETER [mm]	THICKNESS [mm]	BORE HOLE	PACK QTY
3921-115-T27-IM	GRIND-DISC 115X6.4 A24P IN ME	7314150454617	115	6.4	22.23	25
3921-125-T27-IM	GRIND-DISC 125X6.4 A24P IN ME	7314150454761	125	6.4	22.23	25
3921-150-T27-IM	GRIND-DISC 150X6.5 A24P IN ME	7314150454778	150	6.4	22.23	25
3921-180-T27-IM	GRIND-DISC 180X6.5 A24P IN ME	7314150454785	180	6.5	22.23	25
3921-230-T27-IM	GRIND-DISC 230X6.5 A24P IN ME	7314150454792	230	6.5	22.23	25

FLAP DISC FOR METAL AND INOX



3926-XXXIM-CXX



- LIGHTWEIGHT, FLEXIBLE AND LOW IN NOISE THANKS TO MULTI LAYER FIBRE BACKING
- FOR EFFICIENT GRINDING OF STAINLESS STEEL AND METAL
- HEAVY STOCK REMOVAL UNDER HIGH PRESSURE AND HEAT
- CONICAL SHAPED FOR MORE COMFORTABLE POSTURE
- EXTENDED PRODUCT LIFE (100% ZIRCONIUM)
- FREE OF IRON, SULPHUR AND CHLORIDE
- OSA CERTIFIED, IN ACCORDANCE WITH EN13743

DISC	DESC	EAN	DIAMETER (mm)	GRAIN	BORE HOLE	PACK QTY
3926-115IM-C40	FLAP-DISC ZIRCONIA 115 C40	7314150454839	115	C40	22.23	20
3926-115IM-C60	FLAP-DISC ZIRCONIA 115 C60	7314150454846	115	C60	22.23	20
3926-115IM-C80	FLAP-DISC ZIRCONIA 115 C80	7314150454853	115	C80	22.23	20
3926-115IM-C120	FLAP-DISC ZIRCONIA 115 C120	7314150454860	115	C120	22.23	20
3926-125IM-C40	FLAP-DISC ZIRCONIA 125 C40	7314150454884	125	C40	22.23	20
3926-125IM-C60	FLAP-DISC ZIRCONIA 125 C60	7314150454891	125	C60	22.23	20
3926-125IM-C80	FLAP-DISC ZIRCONIA 125 C80	7314150454907	125	C80	22.23	20
3926-125IM-C120	FLAP-DISC ZIRCONIA 125 C120	7314150454914	125	C120	22.23	20

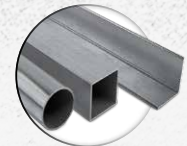
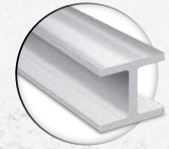
FLAP DISC FOR METAL AND INOX



15°



3927-XXXIM-PXX



- LIGHTWEIGHT, FLEXIBLE AND LOW IN NOISE THANKS TO MULTI LAYER FIBRE BACKING
- FOR EFFICIENT GRINDING OF STAINLESS STEEL AND METAL
- HEAVY STOCK REMOVAL UNDER HIGH PRESSURE AND HEAT
- LONG PRODUCT LIFE (60% ZIRCONIUM / 40% CORUNDUM)
- FREE OF IRON, SULPHUR AND CHLORIDE
- OSA CERTIFIED, IN ACCORDANCE WITH EN13743

DISC	DESC	EAN	DIAMETER (mm)	GRAIN	BORE HOLE	PACK QTY
3927-115IM-P40	FLAP-DISC ZIRCONIA 115 P40	7314150454921	115	P40	22.23	20
3927-115IM-P60	FLAP-DISC ZIRCONIA 115 P60	7314150454938	115	P60	22.23	20
3927-115IM-P80	FLAP-DISC ZIRCONIA 115 P80	7314150454945	115	P80	22.23	20
3927-115IM-P120	FLAP-DISC ZIRCONIA 115 P120	7314150454952	115	P120	22.23	20
3927-125IM-P40	FLAP-DISC ZIRCONIA 125 P40	7314150454976	125	P40	22.23	20
3927-125IM-P60	FLAP-DISC ZIRCONIA 125 P60	7314150454983	125	P60	22.23	20
3927-125IM-P80	FLAP-DISC ZIRCONIA 125 P80	7314150455003	125	P80	22.23	20
3927-125IM-P120	FLAP-DISC ZIRCONIA 125 P120	7314150455010	125	P120	22.23	20

DIAMOND DISC

FOR REINFORCED CONCRETE



3916-XXX-10L-RC

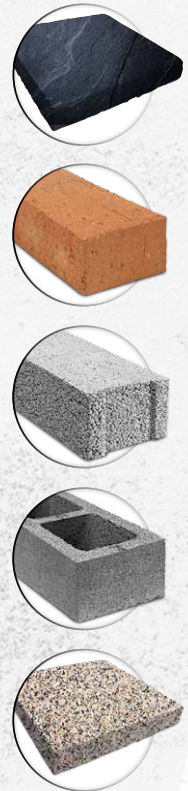


- DIAMOND DISC FOR HEAVY DUTY UNIVERSAL USE
- SUITABLE FOR CUTTING REINFORCED CONCRETE, NATURAL STONES, MARBLE AND WIDE VARIETY OF BUILDING MATERIALS
- 10MM LASER WELDED DIAMOND SEGMENTS FOR LONGER PRODUCT LIFE IN MOST DEMANDING MATERIALS
- IN ACCORDANCE WITH EN13236

DISC	DESC	EAN	DIAMETER (mm)	THICKNESS (mm)	BORE HOLE	PACK QTY
3916-230-10L-RC	DIAM-DISC 230 REINF-CONCRETE	7314150455232	230	2.5	22.23	25

DIAMOND DISC FOR GENERAL PURPOSE

3916-XXX-10S-UE



- 10MM CONTINUOUS DIAMOND RIM
- FOR UNIVERSAL CUTTING OF GENERAL BUILDING MATERIALS AND STONE
- LONG PRODUCT LIFE
- HOT PRESSED DIAMOND SEGMENT
- SUITABLE FOR DRY OR WET CUTTING
- IN ACCORDANCE WITH EN13236


DISC	DESC	EAN	DIAMETER [mm]	THICKNESS [mm]	BORE HOLE	PACK QTY
3916-115-10S-UE	DIAM-DISC 115 UNIVERSAL EXTRA	7314150455270	115	2.5	22.23	100
3916-125-10S-UE	DIAM-DISC 125 UNIVERSAL EXTRA	7314150455287	125	2.5	22.23	100
3916-150-10S-UE	DIAM-DISC 150 UNIVERSAL EXTRA	7314150455294	150	3.0	22.23	50
3916-180-10S-UE	DIAM-DISC 180 UNIVERSAL EXTRA	7314150455300	180	3.0	22.23	50
3916-230-10S-UE	DIAM-DISC 230 UNIVERSAL EXTRA	7314150455317	230	3.2	22.23	25

DIAMOND DISC FOR GENERAL PURPOSE

3917-XXX-7S-U

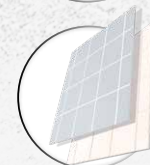
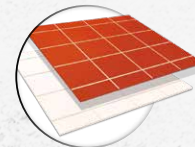


- 7MM SINTERED DIAMOND SEGMENTS
- FOR USE ON CONCRETE SLABS AND GENERAL PURPOSE BUILDING MATERIALS
- SUITABLE FOR DRY OR WET CUTTING
- IN ACCORDANCE WITH EN13236

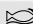
	DESC	EAN	DIAMETER (mm)	THICKNESS (mm)	BORE HOLE	PACK QTY
3917-115-7S-U	DIAM-DISC 115 UNIVERSAL	7314150455249	115	2.0	22.23	100
3917-125-7S-U	DIAM-DISC 125 UNIVERSAL	7314150455256	125	2.0	22.23	100
3917-230-7S-U	DIAM-DISC 230 UNIVERSAL	7314150455263	230	2.6	22.23	25

DIAMOND DISC FOR CERAMICS

3916-XXX-10P-CE

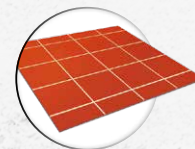


- 10MM CONTINUOUS DIAMOND RIM
- PREMIUM DIAMOND GRADE FOR HIGH QUALITY RESULTS IN PORCELAIN, CERAMIC, VITREOUS, MARBLE, TERRACOTA, GRANITE, SLATE, RECONSTITUTED STONE, FLOOR AND WALL TILES
- EXTRA THIN BLADE (1.2MM) FOR HIGH SPEED CUTTING AND REDUCED MATERIAL WASTAGE
- THE REINFORCED FLANGE ON THE STEEL CENTER TO ENSURE THIN AND STRAIGHT CUTS WITHOUT DAMAGING THE TILE
- SINTERED DIAMOND SEGMENTS
- SUITABLE FOR DRY OR WET CUTTING
- IN ACCORDANCE WITH EN13236

	DESC	EAN	DIAMETER (mm)	THICKNESS (mm)	BORE HOLE	PACK QTY
3916-115-10P-CE	DIAM-DISC 115 CERAMIC EXTRA	7314150455348	115	1.2	22.23	100
3916-125-10P-CE	DIAM-DISC 125 CERAMIC EXTRA	7314150455355	125	1.2	22.23	100

DIAMOND DISC FOR CERAMICS

3917-XXX-7S-C



- 7MM DIAMOND SINTERED SEGMENTS
- FOR CUTTING IN CERAMICS, GRANITE, MARBLE, SLATE, QUARRY TILES
- GREAT PERFORMANCE AT AFFORDABLE PRICE
- SUITABLE FOR DRY OR WET CUTTING
- IN ACCORDANCE WITH EN13236

DISC	DESC	EAN	DIAMETER (mm)	THICKNESS (mm)	BORE HOLE	PACK QTY
3917-115-7S-C	DIAM-DISC 115 CERAMIC	7314150455324	115	2.0	22.23	100
3917-125-7S-C	DIAM-DISC 125 CERAMIC	7314150455331	125	2.0	22.23	100